

## Definition of Highly Capable

Students who exhibit a high capability in intellectual and/or creative areas, possess an unusual leadership capacity, or excel in specific academic fields, thereby requiring services beyond the basic programs provided in schools.

## Our Mission

Arizona Cultural Academy strives to serve its highly capable students in the following ways:

- Provide appropriate challenges for *all* students.
- Serve students with identified needs *every day*.
- Meet the needs of high achieving students and those who have the *potential* for high achievement.
- Recognize the wide variety of highly capable children .

## Our Model

Each highly capable student is identified in his/her area of talent. A student learning plan (SLP) is developed after a student is identified and revisited each year, at a minimum. The purpose of the SLP is to ensure identified children receive the services necessary to support growth in identified content area(s).



**Elementary:** The elementary program is a full inclusion model, meaning that students are serviced within their regular classrooms. The Academic Director serves as a consultant to the classroom teacher and aids in meeting the needs of identified students

**Middle School:** Educational opportunities for each identified student will be designed by teachers in core classrooms in collaboration with relevant staff and families.

**High School:** High school students may self-select opportunities for challenge and enrichment. The high school has opportunities for students through dual-enrollment in college coursework in conjunction with South Mountain Community College.

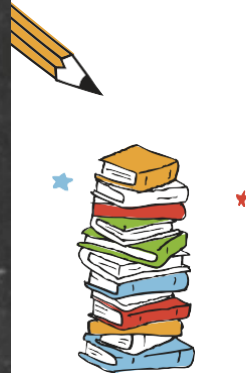
## CONTACT

Would you like to have your child assessed? Please schedule a consultation appointment with the school.

Phone: 602.454.1222

## FOR MORE INFORMATION

[www.azacademy.org/academics/gifted](http://www.azacademy.org/academics/gifted)



## RESOURCES

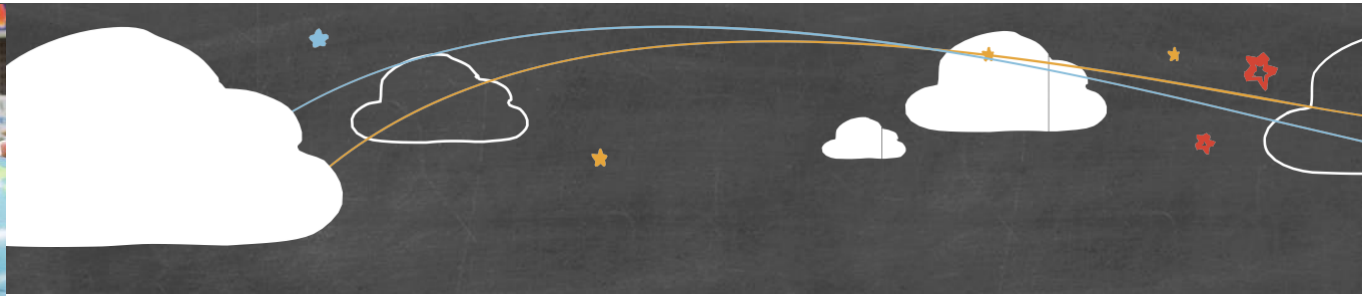
National Association for Gifted Children (NAGC)  
[www.nagc.org](http://www.nagc.org)

Hoagies' Gifted Education Page  
[www.hoagiesgifted.org](http://www.hoagiesgifted.org)

Gifted Development Center, Dr. Linda Silverman  
[www.gifteddevelopment.com](http://www.gifteddevelopment.com)

National Research Center on the Gifted and Talented at the University of Connecticut





## Myths and Facts About Highly Capable Students

**Highly capable kids with the same level of intelligence have the same abilities and interests.** *Highly capable, like all children, are unique individuals and differ in their abilities, talents, and personalities.*

**Highly capable/ gifted education and the “gifted” label are “elitist” because schools with highly capable programs offer “special” treatment for smart kids that already have it all.** *Highly capable education is, in fact, about meeting the academic and affective needs of students whose abilities and knowledge exceed what has traditionally been taught in the regular classroom.*

**Highly capable kids are smart enough to learn by themselves.** *Highly capable children require the same educational and emotional support as other children, but that support must be appropriate to their needs.*

**Highly capable kids are usually from upper middle class professional families.** *Highly capable children are found in all socioeconomic groups in proportionate numbers.*

**All children are highly capable.** *All individuals have gifts that make them unique, but “highly capable” refers to extraordinary, exceptional, beyond-the-norm academic abilities and talents.*

**Gifted students develop socially and emotionally faster than other children their age.** *They don't. Their social and emotional needs are the same as their peers, though because they are academically gifted, many adults make the mistake of thinking they are more emotionally mature than they are.*

## Identification Process

The identification process uses a multiple-criteria approach to help school personnel make appropriate decisions about learning needs of highly capable learners. Students can be referred by parents, teachers, community members, students, etc.

The Cognitive Abilities Test (COGAT) is administered to all students referred for highly capable testing after a consultation appointment. This test is not an IQ test but it does show ability in advanced thinking and problem solving.



GIFTED STUDENTS DON'T NEED HELP: THEY'LL DO FINE ON THEIR OWN: WOULD YOU SEND A STAR ATHLETE TO TRAIN FOR THE OLYMPICS WITHOUT A COACH? GIFTED STUDENTS NEED GUIDANCE FROM WELL-TRAINED TEACHERS WHO CHALLENGE AND SUPPORT THEM IN ORDER TO FULLY DEVELOP TALENTS.

## Common Highly Capable Indicators

| High Achiever                                | Highly Capable                               |
|--|--|
| Remembers answers                            | Poses unforeseen questions                   |
| Is interested                                | Is curious                                   |
| Answers questions in detail                  | Ponders multiple perspectives                |
| Needs 6-8 repetitions to master new learning | Needs 1-3 repetitions to master new learning |
| Is receptive                                 | Is intense                                   |
| Is accurate and complete                     | Is original and continually developing       |
| Absorbs information                          | Manipulates information                      |
| Is pleased with own learning                 | Is self-critical                             |
| Gets A's                                     | May not be motivated by grades               |
| Is able                                      | Is intellectual                              |
| Learns with ease                             | Already knows                                |

